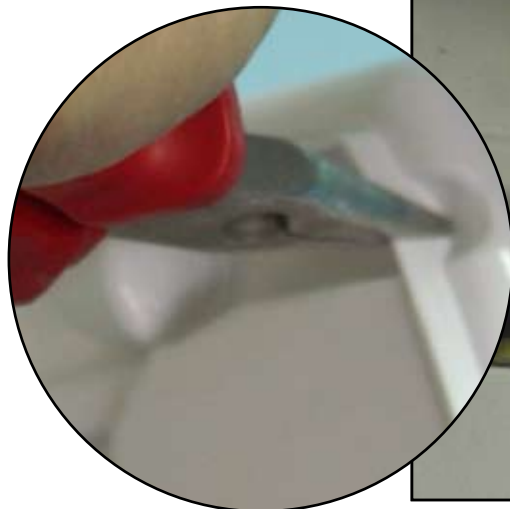


## Step 1



## Step 2

Open the entrance cable in the back of the unit.  
Be sure to open the side of the cable



## Step 3

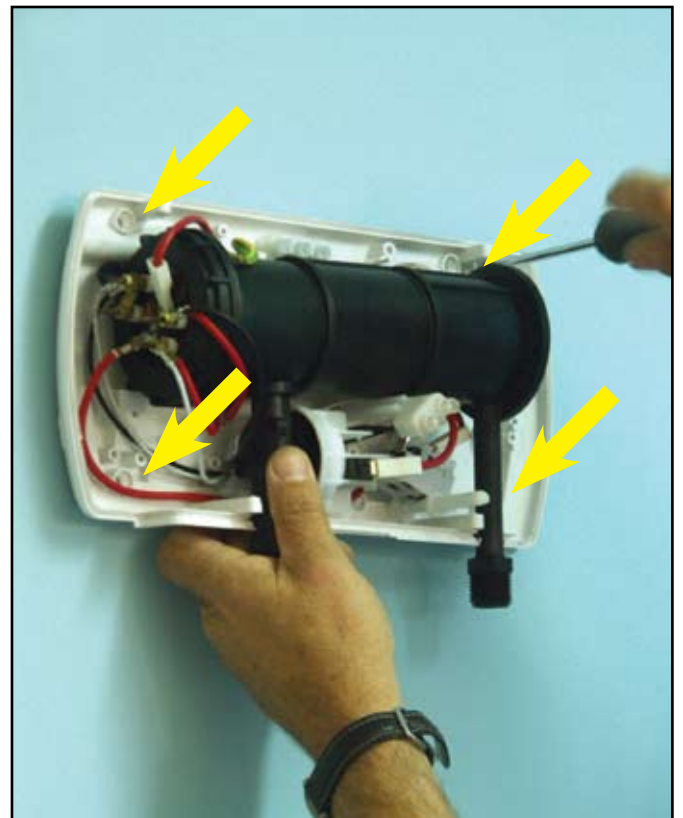
Find the optimal place for all users and stick the drilling hole template to the wall.

Drill 4 holes and insert Plugs.



## Step 4

Hang the unit on the wall by 4 screws



## Step 5

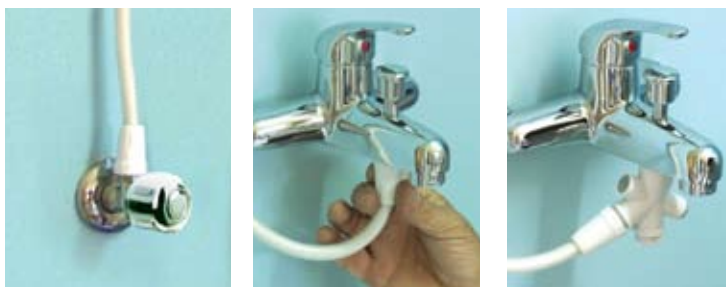
Connect a reinforced hose to the inlet on the left side of the unit. (Don't forget to insert rubbers). Be sure to close it well - No need for tools.



## Step 6

Connect the second end of inlet reinforced hose to the water supply (don't forget to insert the rubbers).

3 samples for water supply



## Step 7

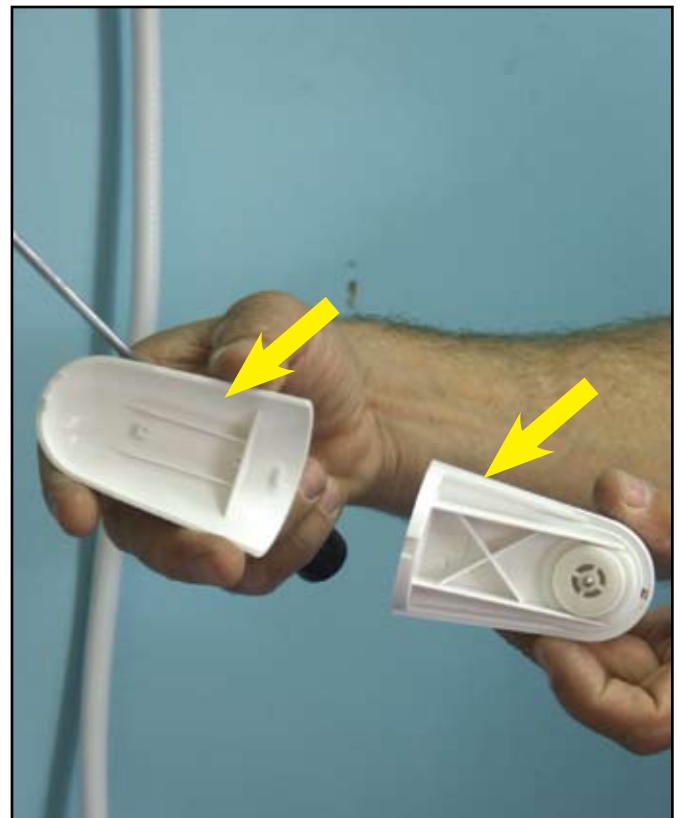
Connect the outlet hose to the outlet water connector. (on the right side).  
and the Shower hand to the second end. (don't forget to insert the rubbers)

**Warranty: Don't connect any tap to the outlet.**



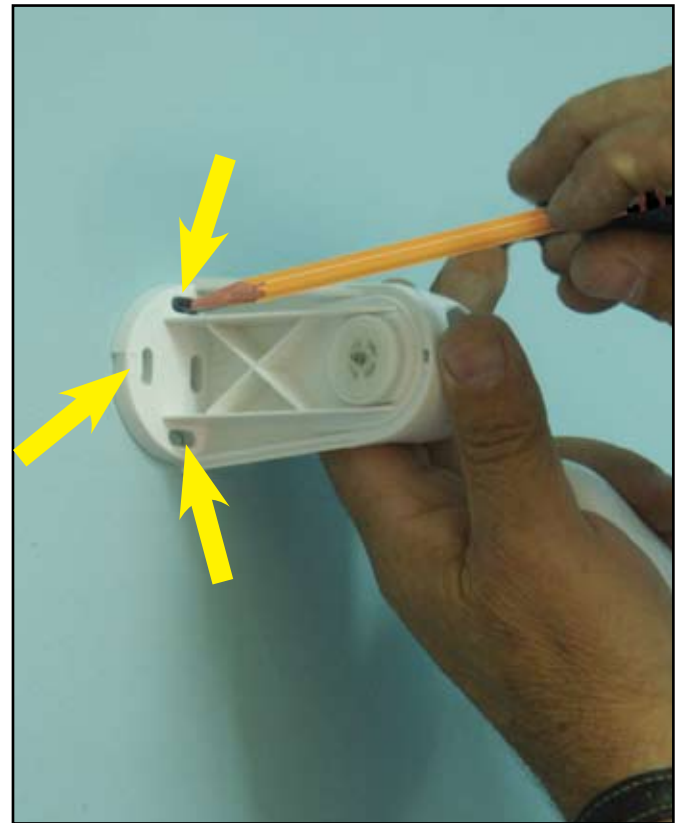
## Step 8

Open the shower hand holder cover



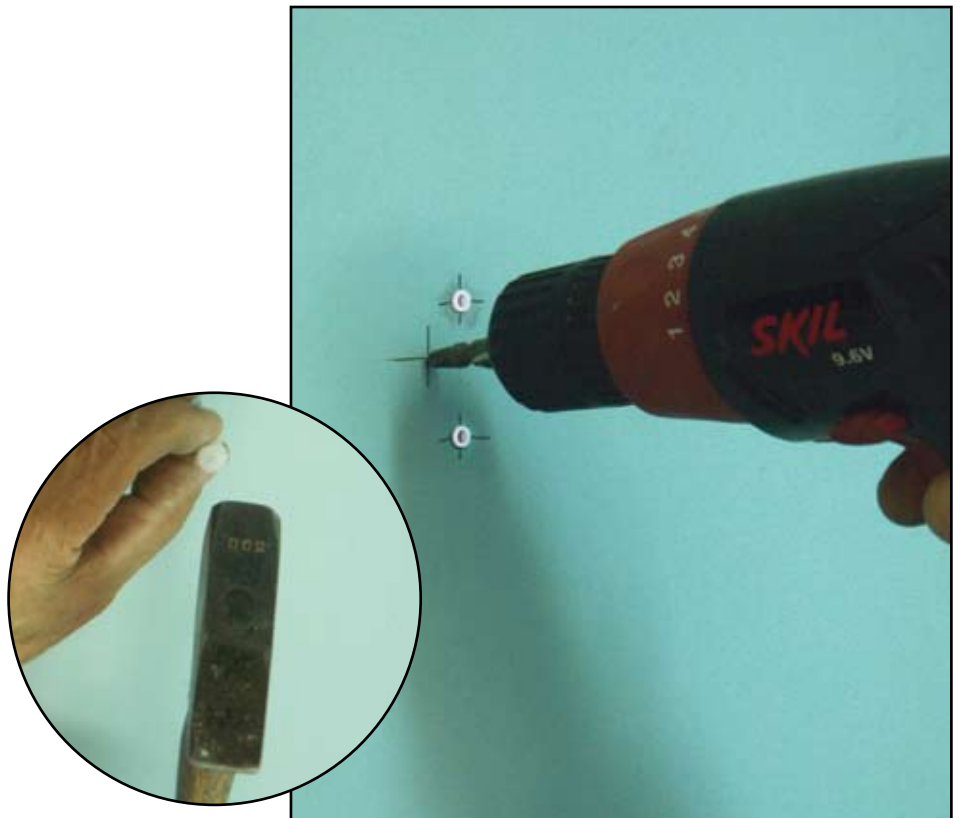
## Step 9

1. Place the shower hand holder on the wall on right height.  
(Comfortable height for all the users in the house)
2. Sign the 3 holes.



## Step 10

1. Drilling 3 holes.
2. Insert plugs.



## Step 11

Connect the shower hand holder to the wall using 3 screws



## Step 12

Connect the cover of the shower hand holder.



## Step 13

Hang the shower hand on the shower hand holder.



## Step 14

Open the water supply and the temperature knob (the left knob) and check for leakage.

If there is no leakage - Go on

If there is leakage,  
Find the leakage point  
and fixe it.

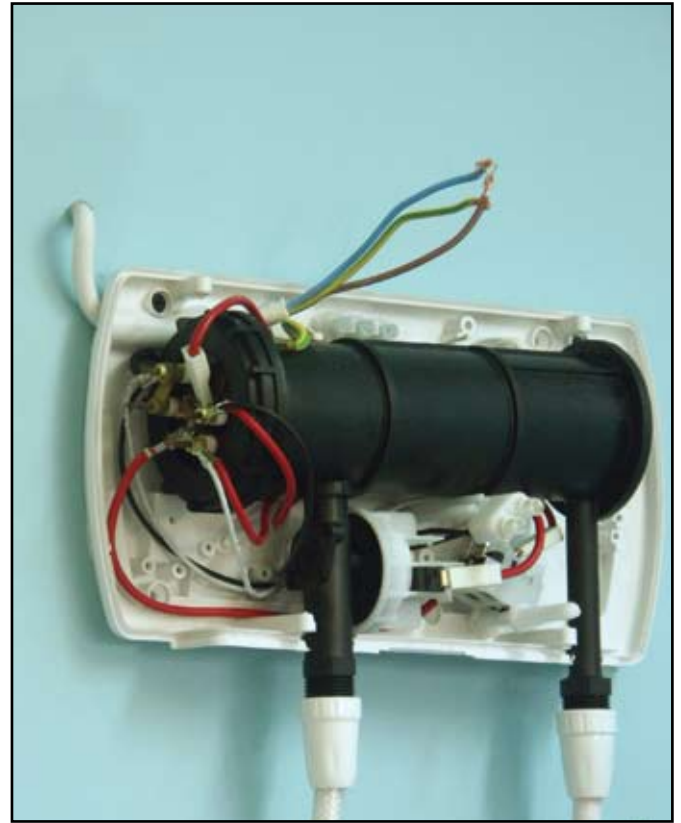
Check again

**Don't continue anless you sure there is no leakage.**



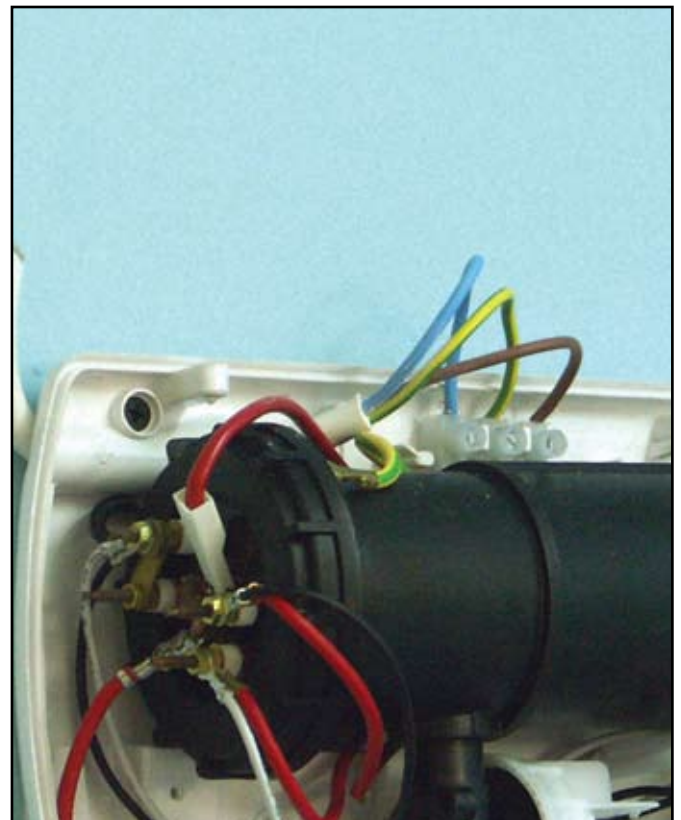
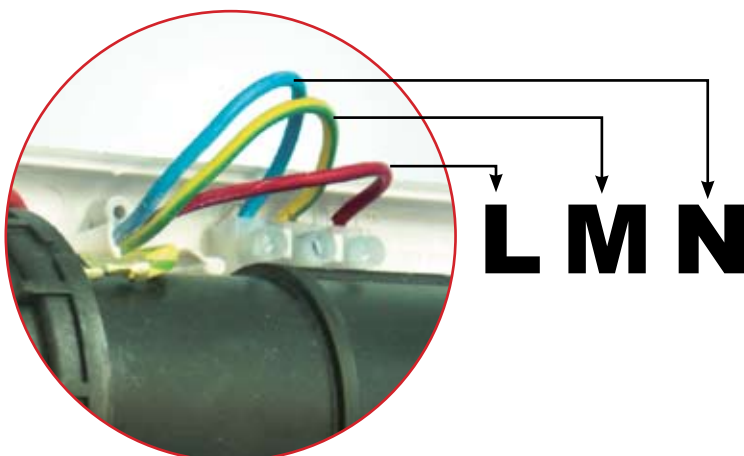
## Step 15

Insert the Electric cable through the holes on the back of the unit.



## Step 16

Connect the electric cable to the Terminal block.





## Step 17

Round the Knob according to the Rotering switch Pivot.  
Than put the cover of the unit.



## Step 18

Close the cover by 4 short screws



## Step 20

Final view

Option A



# Step 20

Final view

Option B

